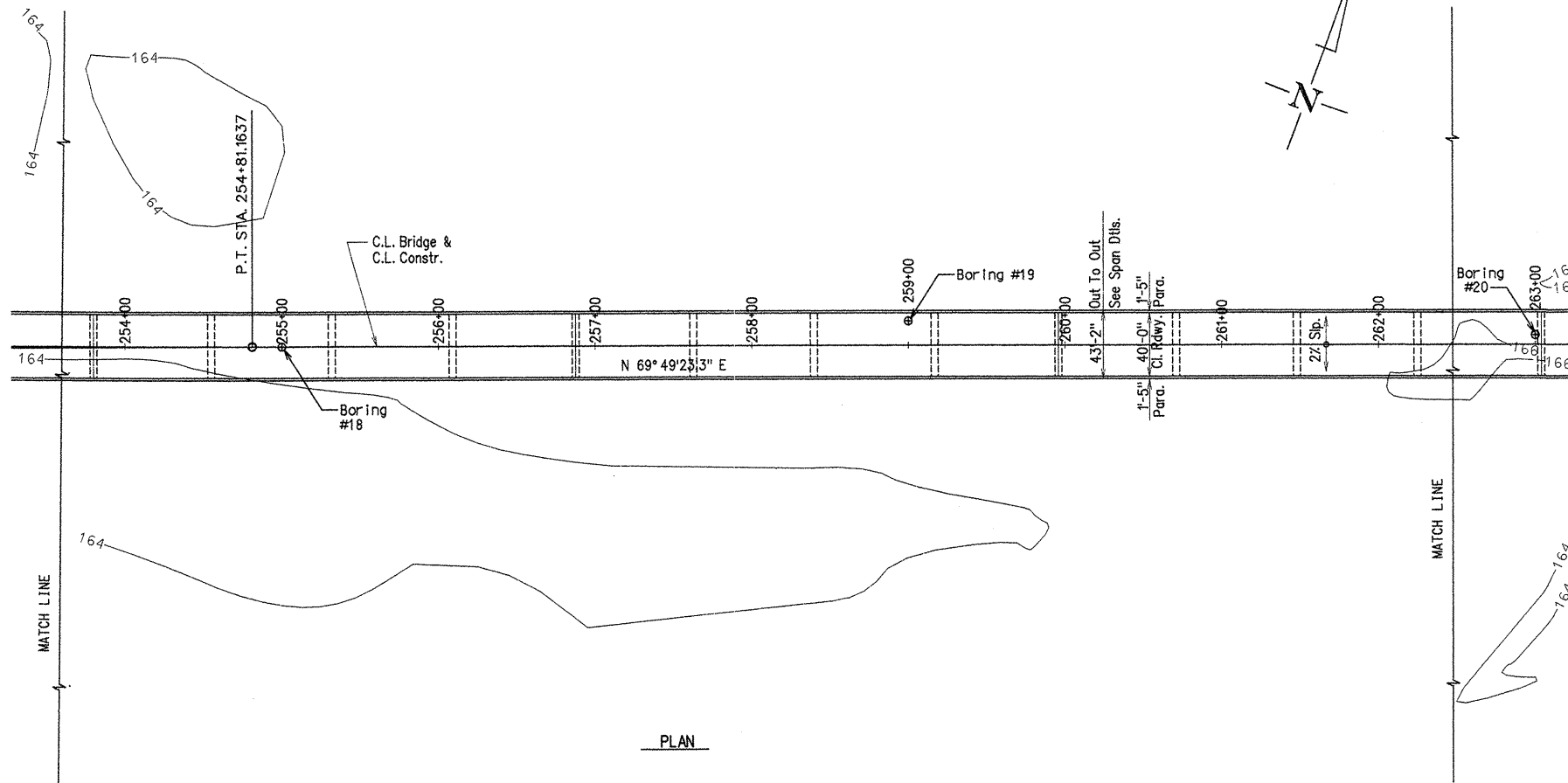


PI = 245+98.3762
 Δ = 8° 50' 43.6234" LT.
 DD = 0° 29' 59.9931"
 RT = 11459.2000'
 T = 866.3095'
 L = 1769.0970'
 PC = 237+12.0667
 PT = 254+81.1637

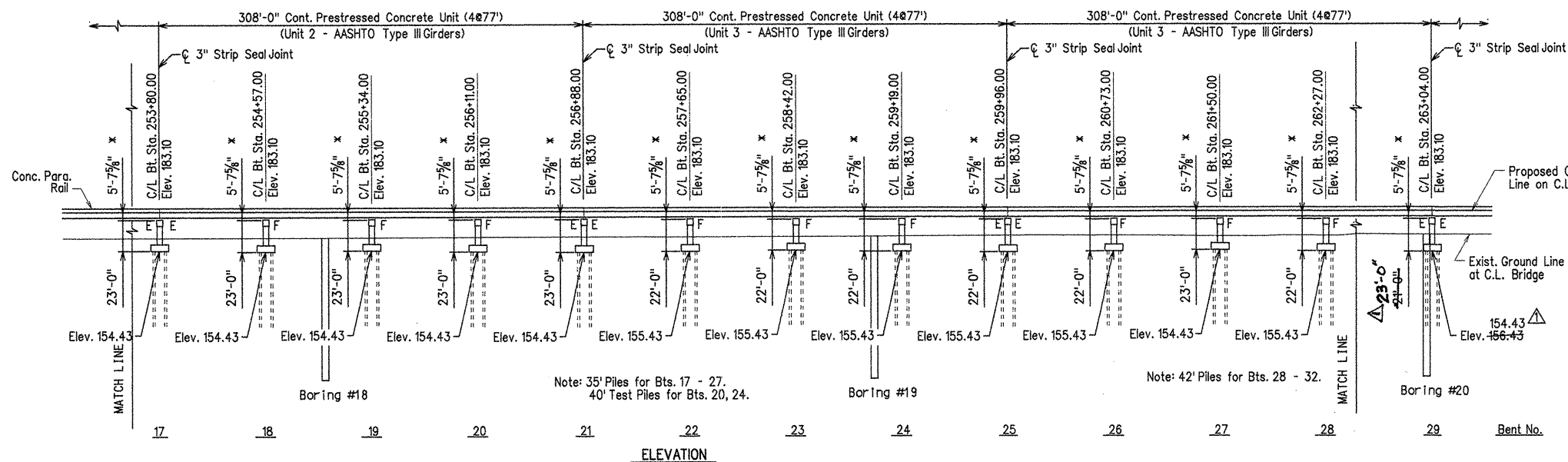
For R/W Data - See Rdwy. Plans

DATE REVISED	DATE FILMED	DATE REVISED	DATE FILMED	FED. ROAD DIST. NO.	STATE	FED. AID PROJ. NO.	SHEET NO.	TOTAL SHEETS
12-14-11				6	ARK.		16	203
				JOB NO.	110395			
				06830	LAYOUT		47014	



Total Length of Bridge (Ph. II & III) = 9468'-3 7/8"

Total Length of White River Bridge in Phase III = 6955'-1 1/4"

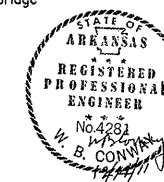


* Top of Deck at C.L. Bridge and C.L. Bent to Low End of Cap

Strip Seal Joints are designated as "X" Strip Seal Joints where "X" represents the "A" dimension at 60 degrees F as shown in the table on dwg. no. 47095 - 47099.

Note: See dwgs. no. 47024 - 47028 for Soil Borings & additional data.
 See dwg. no. 47023 for General Notes.
 See dwg. no. 47020 for Hydraulic Data Table.

△ Revised Footing Elevation at Bent 29 by HJE/MM
 GPT 12-14-11



ALTERNATE NO. 1

LAYOUT OF BRIDGE OVER WHITE RIVER
 (SHEET 3 OF 9)

WHITE RIVER STR. & APPRS.
 (CLARENDON) (PH. III) (F)
 MONROE COUNTY

ROUTE 79 SEC. 13

ARKANSAS STATE HIGHWAY COMMISSION
 LITTLE ROCK, ARK.

Engstrom / Modjeski and Masters

DRAWN BY: LKD/TAD DATE: Sep. 10 FILENAME: b1103951_103.dgn
 CHECKED BY: FS DATE: Sep. 10 SCALE: 1" = 50'-0"
 DESIGNED BY: YO DATE: Sep. 10
 BRIDGE NO. 06830 DRAWING NO. 47014